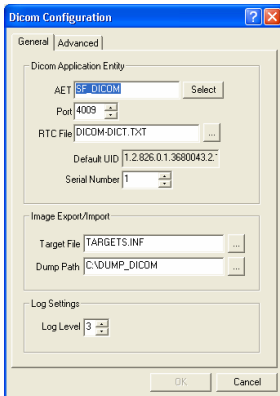


Quick Start ... DICOM Store and Forward Utility

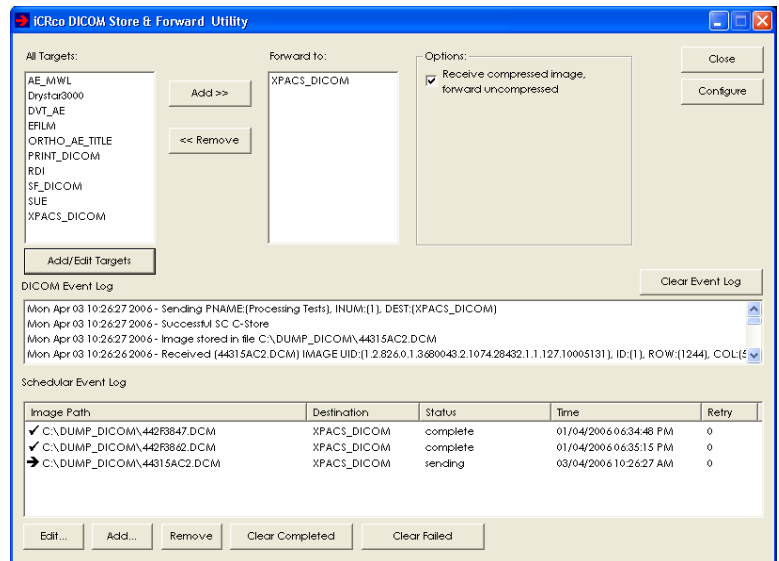
Setting up targets for forwarding

1. Under the **All Targets** list select the target(s) you want to forward to.
2. Select the **Add >>** button.
3. To remove target(s) from the forward to list. Select the target under the **Forward to** list and click on the **<< Remove** button.



Configuring Store and Forward Utility DICOM settings.

1. Select the **Configure** button.
2. The default DICOM settings are:
 - AET: SF_DICOM
 - Port: 4009



Sending to Store and Forward Utility

1. From the sending application select the images to want to send.
2. Then select the Store and Forward Utility as the DICOM target to send to. I.e. AET of SF_DICOM
3. The images will appear in the **Scheduler Event Log**
4. The Store and Forward Utility will keep retrying to send images if failed.
5. The status will be updated with sending, complete, transfer pending.

The screenshot shows the 'Scheduler Event Log' table with the following data:

Image Path	Destination	Status	Time	Retry
✓ C:\DUMP_DICOM\442F3847.DCM	XPACS_DICOM	complete	01/04/2006 06:34:48 PM	0
✓ C:\DUMP_DICOM\442F3862.DCM	XPACS_DICOM	complete	01/04/2006 06:35:15 PM	0
→ C:\DUMP_DICOM\44315AC2.DCM	XPACS_DICOM	sending	03/04/2006 10:26:27 AM	0

Options

The Store and Forward Utility defaults to forwarding all images as uncompressed even if it received them compressed. If you want received compressed images to remain compressed for the PACS system then unselect the option **Receive compressed image, forward uncompressed**.

NOTE: The Store and Forward Utility may report the status as complete but the PACS system may still reject the image. If the image has an incorrect DICOM tag or it is a duplicate study, series or image UID. Always confirm that the PACS system has received the image before deleting images from the capture station.

