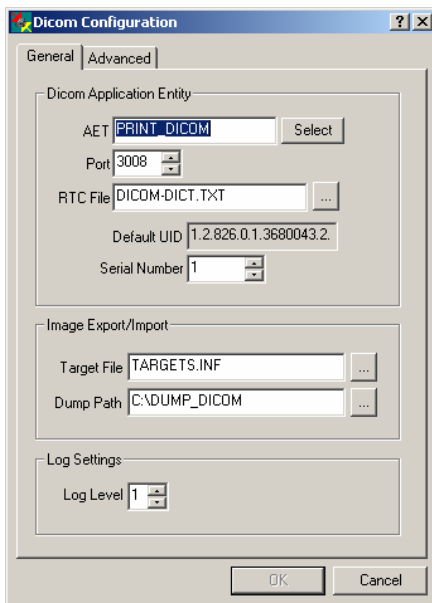
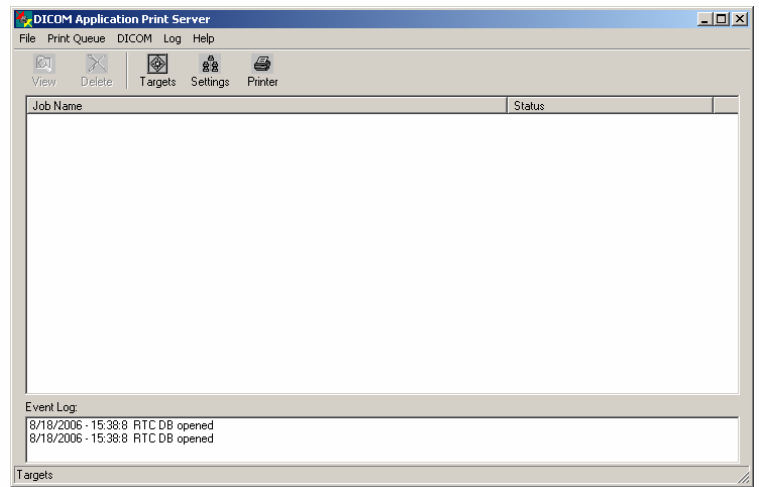
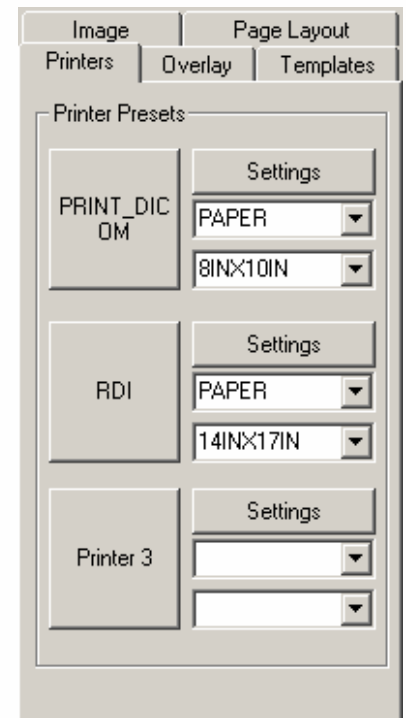


Quick Start ... Printing to a Windows Printer

1. To setup QPC to open the DICOM Application Print Server go to Options, Preferences and then click on the Image Transfer tab. Select the option “Use Windows to DICOM Printer.” You will also need to have “Use DICOM Print” selected.
2. The DICOM Application Print Server will print to the default windows printer. I.e. Under windows control panel select “Set As Default Printer” to the printer you want to print to. The print server uses this default printer.



3. Click on the **Settings** button to change the AET, port number or any other information for the DICOM Application Print Server.
4. To print to the DICOM Application Print Server set the AET in the Advanced DICOM Printer to the DICOM Application Print Server's AET details.
5. Select the images in QPC that you want to print and select the **DICOM Print** button. Optimize the images in the QPC software and click on **Print**.



Quick Start ... Printing to a Windows Printer

Troubleshooting Windows to DICOM Print

1. Make sure there is only one instance of them open in Task Manager.
 - To open Task Manager (Click on Start menu, Click Run, Type in "taskmgr", Click OK).
 - Close QPC XSCAN32.
 - Look for DCM.exe, DICOMMultiPrinter.exe, AppPrintSCP.exe. If there are any open please select and click on End Process. Reopen QPC XSCAN32.
2. Check target information for both applications (Advanced DICOM Print and DICOM Application Printer Server).
 - Select Advanced DICOM Print and click on Configure DICOM button. The DICOM Configuration dialog will appear. The target details for this application are usually: AET: ADV_PRINT_DICOM, PORT: 4008, IP: 127.0.0.1
 - Click on Select to see full details of this target. If Advanced DICOM Print has not been entered as an item in the targets list then please add it with the above details. Then select this new target and click OK.
 - Click OK on the DICOM Configuration to save settings.
 - Close QPC XSCAN32 and reopen
 - Select DICOM Application Printer Server and click on Settings button. The DICOM Configuration dialog will appear. The target details for this application are usually: AET: PRINT_DICOM, PORT: 3008, IP: 127.0.0.1
 - Click on Select to see full details of this target. If DICOM Application Printer Server has not been entered as an item in the targets list then please add it with the above details. Then select this new target and click OK.
 - Close and reopen QPC XSCAN32.
 - Make sure that PRINT_DICOM is the default printer. To set it as the default, select the Printers tab in ADVANCED DICOM PRINT and click on "Settings" under Printer Presets. Select the AET and other print options. Click on "Test Printer" to ensure that these settings are correct.
 - Try printing. If it fails recheck that multiple instances are not open in task manager.
3. Make sure no options are selected that should not be selected.
 - If the printer does not support border properties then unselect.
 - If the printer does not support background properties then unselect.
 - If the printer does not support 12-bit images then unselect.
 - Try printing. If it fails recheck that multiple instances are not open in task manager.
4. Make sure correct print options are selected.
 - If printing to a windows printer you cannot have BLUE_FILM selected (unless it has BLUE_FILM). You need to select PAPER.
 - The default for a regular windows printer for paper size is 8INx10IN. Try other options if this fails. If you have the wrong paper size selected it will bring up a failed message in DICOM Application Printer Server and the message log will say incorrect paper size.

