

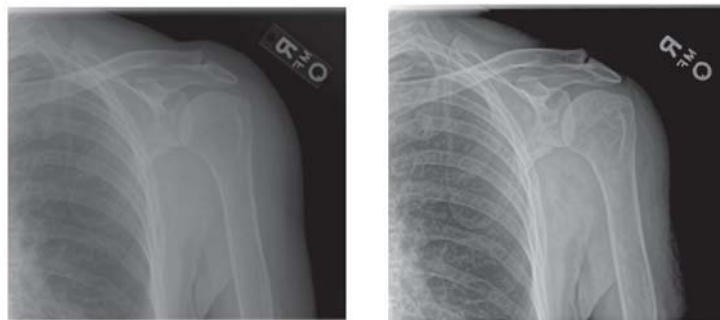


Quick Start: QPC XSCAN32 Processing

CR Processing

1. Open an image for viewing.
2. Select an anatomy from the *CR Preset* box.
3. Click the **Process** button to begin the processing.
4. The user may press the **Reset** button to restore the original image data set.
 **Note:** the user can also press the Process button again and the original data set will be automatically restored and processed again.
5. To optimize processing strength, change Gain and Frequency Enhancement as needed.
 **Note:** The user can update the CR preset by selecting the Update button, which will ensure that these processing strengths will be used each time with the currently selected anatomy.

CR Processing Example:



Original Image

Processed Image