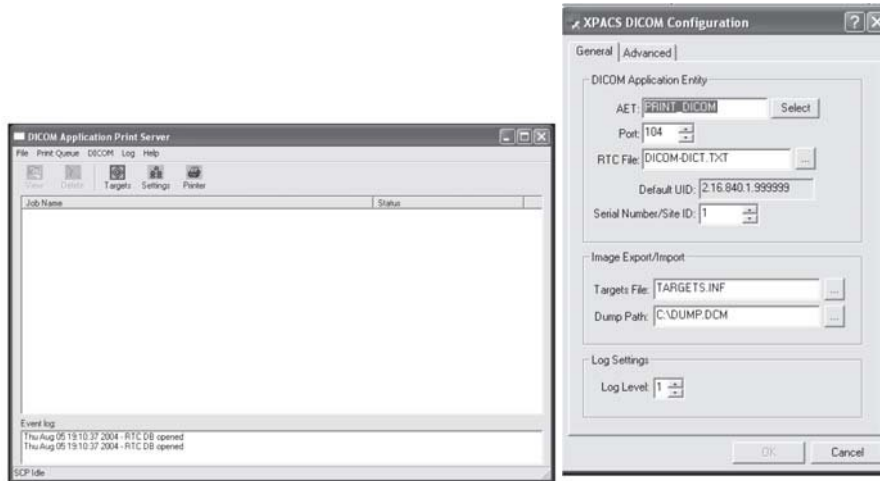


Quick Start: QPC XSCAN32 Windows Printing

Printing to a Windows Printer

1. To configure XSCAN to open the DICOM Application Print Server, go to *Options*→*Preferences*→*Image Transfer* tab. Select the option *Use Windows to DICOM Printer*. *DICOM Print* must also be selected.



2. The Dicom Application Print Server will print to the default windows printer. In the *Windows Control Panel* select "Set As Default Printer" to the desired printer. The print server uses this default printer.
3. To change the AET, port number or any other information for the DICOM Application Print Server, click on the **Settings** button.
4. To print to the DICOM Application Print Server, set the AET in the Advanced DICOM Printer to the DICOM Application Print Server's AET details.
5. Select the images in QPC XSCAN32 to print and then select the DICOM Print button. Optimize the images in the QPC XSCAN32 software and select print.



Quick Start: QPC XSCAN32 Windows Printing

Troubleshooting Windows to DICOM Print

1. Make sure there is only one instance of them open in Task Manager. To open Task Manager (Click on Start Menu, Click Run, Type in "taskmgr" Click OK). Close QPC XSCAN32. Look for DCM.exe, DICOMMultiPrinter.exe, AppPrintSCP.exe. If any of these are open please select and click on End Process. Reopen QPC XSCAN32.
2. Check target information for both applications (Advanced DICOM Print and DICOM Application Printer Server). Select Advanced DICOM Print and click on Configure DICOM button. The DICOM Configuration dialog will appear. The target details for this application are usually: AET: ADV_PRINT DICOM, PORT: 4008, IP: 127.0.0.1, Click on Select to see full details of this target. If Advanced DICOM Print has not been entered as an item in the targets list then please add it with the above details. Then select this new target and click OK. Click OK on the DICOM Configuration to save settings. Close QPC XSCAN32 and reopen Select DICOM Application Printer Server and click on Settings button. The DICOM Configuration dialog will appear. The target details for this application are usually: AET: PRINT DICOM, PORT: 3008, IP: 127.0.0.1, Click on Select to see full details of this target. If DICOM Application Printer Server has not been entered as an item in the targets list then please add it with the above details. Then select this new target and click OK. Close QPC XSCAN32 and reopen. Go to Advanced DICOM Print and Test Printer, assuming that you have the DICOM_PRINT target selected as the default printer to print to. To set it as the default, select the Printer tab in ADVANCED DICOM PRINT and select DICOM_PRINT button. Try printing. If fails recheck that multiple instances are not open in task manager.
3. Make sure no options are selected that should not be selected. If the printer does not support border properties then deselect. If the printer does not support background properties then deselect. If the printer does not support 12-bit images then deselect. Try printing. If fails recheck that multiple instances are not open in task manager.
4. Make sure correct print options are selected. If printing to a windows printer you cannot have BLUE_FILM selected (unless it has BLUE_FILM). You need to select PAPER. The default for a regular windows printer for paper size is 8Inx12IN. Try other options if this fails. If you have the wrong paper size selected it will bring up a failed message in DICOM Application Printer Server and the message log will say incorrect paper size.

