

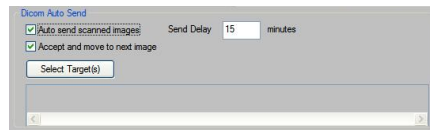
Quick Start: QPC XSCAN32 DICOM Auto-Send

DICOM Auto-Send

Setting-up DICOM Auto-Send

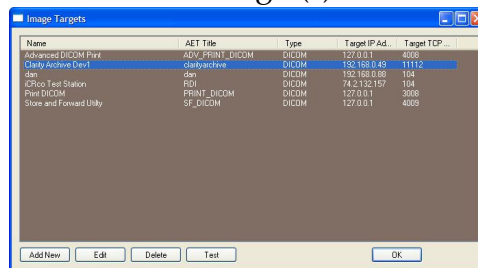
1. Open QPC XSCAN32.
2. Go to *Options* → *Preferences* → *Image Transfer* tab.
3. Select the option **Auto send scanned images**.

Figure 1: Check the Auto send box to enable auto-send



4. Set the *Send delay*. The default is one (1) minute.
5. Click the **Select Target(s)** button.
6. Select the target(s) to send to. The User may Ctrl-click to select multiple targets.

Figure 2: Select the Target(s) to auto-send to.



7. Click the **Apply** button, then the **Ok** button.

Using DICOM Auto-Send

1. Open an image for viewing.
2. Process and optimize the image as necessary.
3. Click the **Accept** button to accept and auto-send the image to the target. If the image is reprocessed or the orientation changed, the **Accept** button will reappear, and the image can be resent if necessary.