


# Quick Start: QPC XSCAN32 Masking

## CR Collimation Masking

1. Open an image for viewing.
2. Click the **Mask**  button.
3. To remove the collimation mask, select the **Mask** button again.


### CR Masking Example

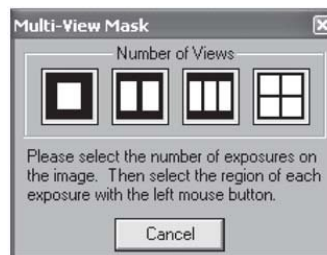



Before Masking

After Masking

## CR User Masking

1. Open an image for viewing.
2. Click the **User Mask**  button.
3. Select the number of views from the *Multi-View Mask dialog*, (i.e., if there are two hand exposures on one image, select the two-view button).



4. Hold the left mouse button down on the start region and move the mouse to the end of the mask region.
5. Repeat step 4 for each exposure. After the user has completed selecting the number of exposures, the masks will appear on the image.
6. To remove the User Mask, select the **User Mask**  button.