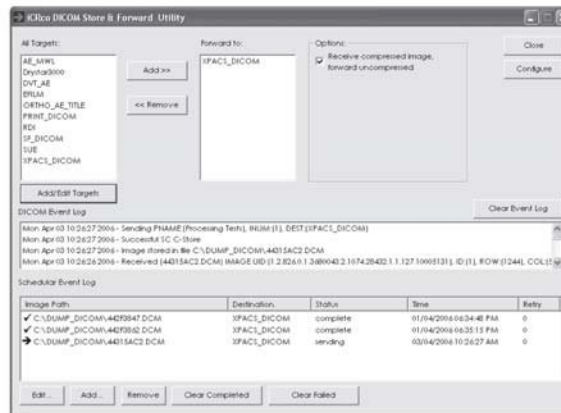


Quick Start: DICOM Store & Forward Utility

DICOM Store and Forward Utility

Setting up targets for forwarding

1. Under the *All Targets* list, select the target(s) to forward.
2. Click the **Add** >> button.
3. To remove target(s) from the forward to list, select the target under the *Forward To* list, then click the << **Remove** button.



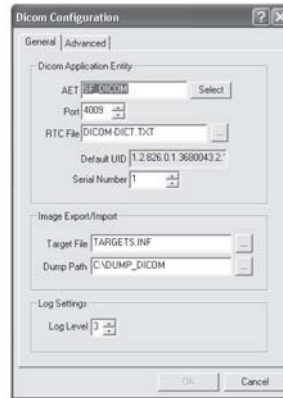
Configuring Store and Forward Utility DICOM settings

1. Click the **Configure** button.
2. The default DICOM settings are:
 - AET SF_DICOM
 - Port: 4009

Sending to Store and Forward Utility


1. From the sending application, select the images to send.
2. Then select the *Store and Forward Utility* as the DICOM target to send to (the AET of SF_DICOM). The images will appear in the Scheduler Event Log.
3. The Store and Forward Utility will keep retrying to send images if failed.
4. The status will be updated with sending, complete or transfer pending.

Quick Start: DICOM Store & Forward Utility



Options

The Store and Forward Utility defaults to receiving compressed images and forwarding them on decompressed. If you want to receive compressed images and send them on compressed to the PACS system, then deselect the option *Receive compressed image, forward uncompressed*.

 **Note:** The Store and Forward Utility may report the status as complete but the PACS system may still reject the image. If the image has an incorrect DICOM tag or it is a duplicate study, series or image UID. Always confirm that the PACS system has received the image before deleting images from the capture station.