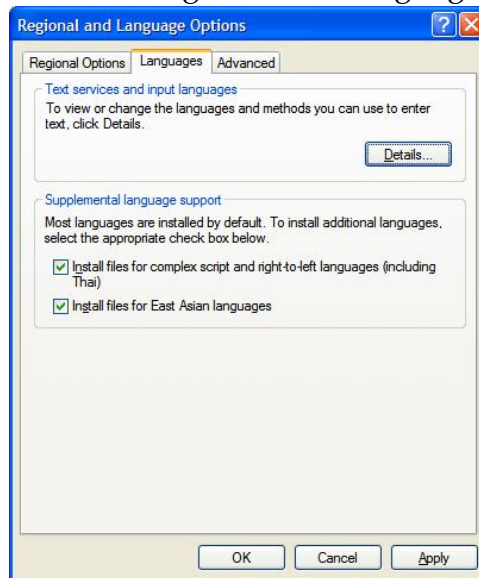



Quick Start: QPC XSCAN32 Changing Languages

Changing the Default Language

1. Go to *Start* → *Control Panel* → *Regional and Language Options*.
2. If you are going to use an East Asian Language select the *Languages* tab.
3. Under the *Supplemental language support*, select the check boxes **Install files for complex script and right-to-left languages (including Thai)** and **Install files for East Asian languages**.

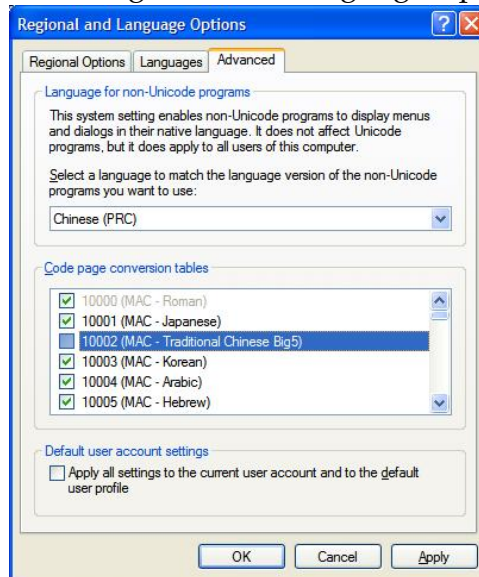
Figure 1: Windows XP's Regional and Language Options dialog



4. Click **Apply** and **OK**.  **Note:** The User may be prompted to reboot. If so, upon system restart verify that steps 1 to 3 have been completed.
5. Click *Advanced* tab in the *Regional and Language Options* window.
6. Under *Language for Non-Unicode Programs*, select the desired language options, i.e., Chinese PRC, Thai, etc.

Quick Start: QPC XSCAN32 Changing Languages

Figure 2: Windows XP's Regional and Language Options Advanced tab



7. Under *Code page conversion tables* select any of the necessary options for your language, i.e., if you selected Chinese, ensure the check box next to Chinese is checked.
8. Click **Apply**.
 - ✎ Note: The User may be prompted to reboot.
9. Open QPC XSCAN32.
10. Go to the *Language* menu, then select the desired language.

Figure 3: QPC XSCAN32's Language Selection Menu

