


Quick Start: QPC XSCAN32 Bar Codes


Associating a Barcode with a Study



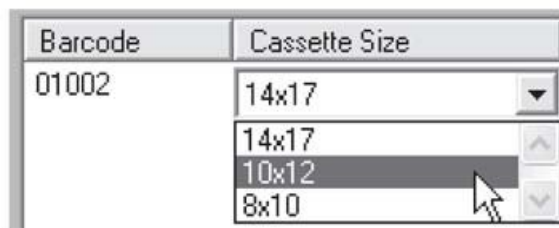
1. In the patient information window, enter patient and study information.
2. Select patient and study.
3. Select **Add Barcode** button.
4. Using a barcode reader, scan the barcode of an unexposed cassette.
5. The barcode will be added into the barcode list with the default cassette size 14x17.
6. Repeat steps 3 to 5 for each cassette that will be associated with the study.




 **Note:** The user can change the cassette size by clicking under the column Cassette Size and selecting the actual size. This will be saved for future use in the database.

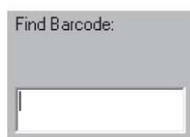
 **Note:** The user can remove the association by selecting the barcode from the list and selecting the Delete Barcode button.

Quick Start: QPC XSCAN32 Bar Codes



Finding Barcodes and Scanning Images

1. In the patient information window, select the **Find Barcode Edit** box.
2. Using a barcode reader, scan the barcode of the exposed cassette.
3. Select the anatomy information for the study.
 **Note:** This can be corrected later in QPC XSCAN32 when viewing the images.
4. Load cassette into the CR unit.
5. Select the appropriate scan button.
6. QPC XSCAN32 will automatically open the study that the cassette is associated with. The scan interface will open with the details of the associated patient.

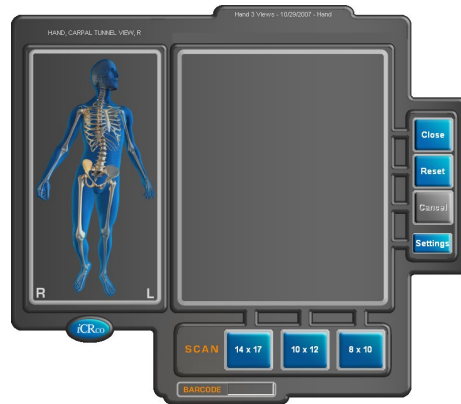


7. The image will be imported into QPC XSCAN32 when it has completed scanning. The association with that cassette barcode and the study will be removed and the cassette can be reassigned to another patient.

Other Tips

The scan interface also allows the user to find barcodes in the database. The patient information displayed in the scan interface will change depending on the barcode selected for scanning.

Quick Start: QPC XSCAN32 Bar Codes



The image below indicates that the image will appear under the patient Joe Smith and the barcode for the cassette that will be scanned is 01003.

(No CR detected) Smith, Joe - January 01, 1955 - CHEST LAT (Barcode: 01003)

There is an option in the scan interface settings that requires the user to scan the barcode before they are able to scan cassettes into the interface. In other words they have to tell the scan interface which barcode they are scanning. If no barcode has been selected for scanning the user will be prompted to find a barcode.